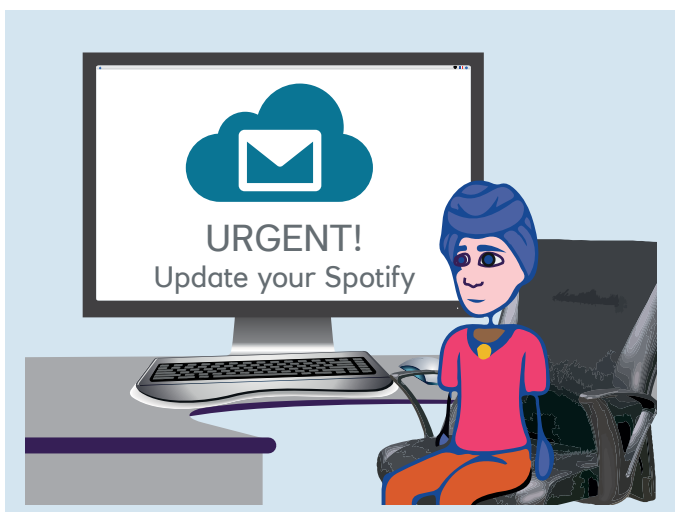


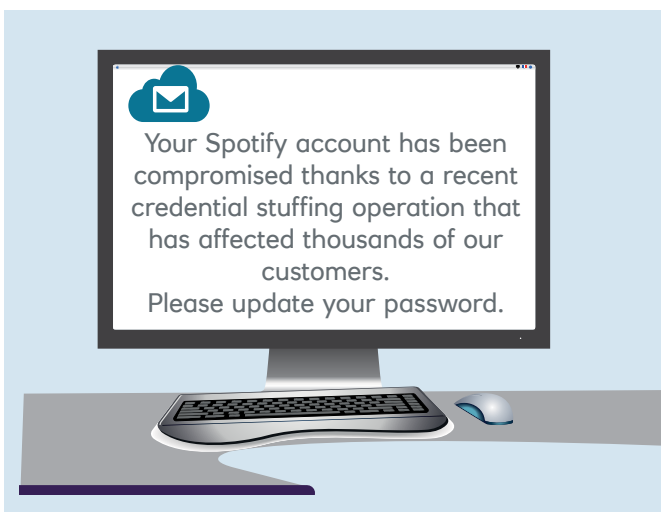
## Credential Stuffing

'Credential Stuffing' is when a criminal takes advantage of a data breach and steals your data including usernames and passwords. When they then have this data they will then try to login to your accounts. If you reuse your password across multiple accounts the criminals will then have access to more than just one of your accounts.



### Your Spotify account has been hacked!

It can feel like you don't know what to do. Especially as you realise your password that has been breached is used across multiple other accounts like your online shopping.



Luckily there are steps you can take:

- Change all your passwords that are shared with Spotify
- Turn on 2 Factor authentication as an extra layer of security
- Contacting your bank if your card details have been compromised



& remember don't reuse passwords between your home and work accounts.